

Materials & Accessories

Slings & Cord

Atom, Aura, Equinox, Horizon, Mercury, and Monterey

All slings are made either from Textilene®, a woven PVC -coated polyester yarn or Sunbrella® woven fabric, for extra luxury.

Focusing on subtle patterns that read as textures, Sunbrella® sling allows you to achieve an elevated indoor aesthetic in an outdoor setting. These materials guarantee that our slings are strong, durable, mildew resistant, and require the minimum of maintenance. After rain, a light tap and any water simply drops off. To keep your Sunbrella® fabrics and Textilene® slings in optimum condition we recommend using ‘Woven & Sling Non-Foam Cleaner’ (4WTC).

The Atom armchair seat is made from Denim Sunbrella® sling fabric to create a clean line that is comfortable. Our elegant Monterey armchair is built using quality materials and refined construction methods, combining a sculpted solid teak frame. The seat and back use braided all-weather cord that’s a woven blend of Olefin fibre (a key feature is its colour-fastness) and all-weather Textilene®, making it rugged but with a soft hand. Monterey offers a choice of two cord colours: .400 Brown or .401 Chalk.



Brown

.400



Chalk

.401

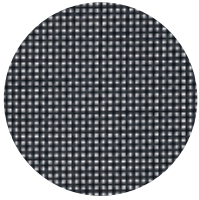
Slings & Cord features:

- Over two hundred feet of all-weather Textilene® cord is used for the dining Monterey armchair seat and backrest
- Sunbrella® fabric sling blends the strength of PVC with the softness of Sunbrella® acrylic yarn for added comfort
- Minimal care and maintenance
- Resistant to the outdoor environment

Sling fabrics – Textilene® and Sunbrella®

The Aura collection is available in 3 set colourways. When ordering from these collections, please add the correct colour suffix to the product code. Aura non-Modular and Modular seating comes in the standard frame + Textilene® sling colour. The Equinox stainless steel extending dining table 360, is available powder coated/painted, in 2 colourways: .01 Graphite powder coated frame and .808 Dusk ceramic tabletop, with matching .513 Carbon Sunbrella® fabric slings for dining side chair and armchair. .02 Arctic White powder coated frame and .806 Frost ceramic tabletop, with matching .512 Seagull Sunbrella® fabric slings for dining side chair and armchair. The Equinox or Mercury ‘powder coated/ painted’ armchairs (and loungers) are available in both Carbon and Seagull Sunbrella® sling colours, which complement the tables. The Atom armchair uses Denim Sunbrella® sling fabric. This sling fabric blends the strength of PVC with the softness of Sunbrella® acrylic yarn for added comfort.

Parasols are manufactured from Sunbrella® canopy fabrics; a durable, 100% solution-dyed acrylic. With the parasol fabric colour locked deep inside the yarn, it gives excellent resistance to the fading often caused by sunlight and cleaning.



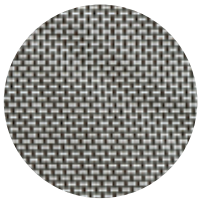
Charcoal

.500



Titanium

.502



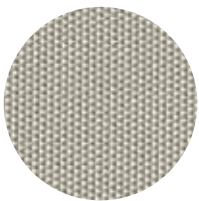
Platinum

.504



Pearl

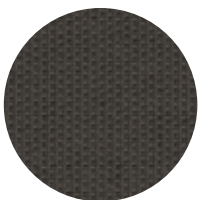
.505



Seagull

.512

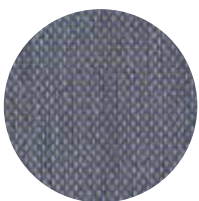
Equinox & Mercury only



Carbon

.513

Equinox & Mercury only



Denim

.514

Atom only



Canvas

.302

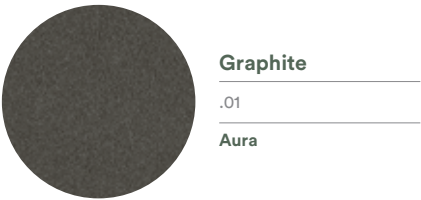


Monterey Armchairs with Brown cord
and Colchester Low Table 54



Equinox Dining Armchair with Platinum Sling

Powder Coated Frames



Graphite

.01

Aura



Arctic White

.02

Aura, Layout



Grey

.03

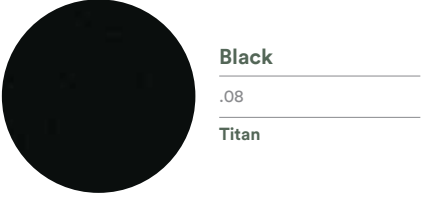
Parasol bases



Champagne

.04

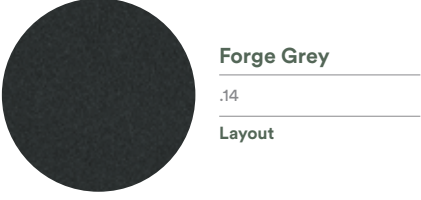
Aura



Black

.08

Titan



Forge Grey

.14

Layout

Atom, Aura, Equinox, Layout, Mercury, Monterey and Titan

These products are powder coated to give a long period of maintenance free service with a stunning visual effect. We use an environmentally-friendly process to clean and etch the aluminium and stainless steel before applying a high quality oven-fired powder coating.

Equinox, Layout and Mercury offer powder coated dining side chairs, armchairs and settees, using a ‘marine grade’ stainless steel frame and seating in complimentary sling colours.

The Equinox extending dining table 360 features a .01 Graphite powder coated frame with a .808 Dusk ceramic top or a .02 Arctic White frame with a .806 Frost ceramic top. Monterey tables have a .02 Arctic White frame with a .806 Frost ceramic top or a .01 Graphite frame with a .805 Oxide ceramic top.

Product care and maintenance

For powder coated finishes it is important that the finish is cleaned regularly using a solution of mild detergent in warm water to retain the aesthetic qualities and the expected long term durability. Surfaces should be cleaned using a soft cloth, sponge or a natural bristle brush, avoiding abrasive materials that may damage the finish. The frequency of cleaning depends upon the environment in which the products are placed but as a general guide an annual clean will suffice in most urban environments. In areas of high pollution, such as marine and swimming pools, cleaning should be carried out on a more frequent basis.

Aluminium and stainless steel products – Frame touch-up paint colours

7TUP.01 “Graphite” touch-up paint – 12ml.

7TUP.02 “Arctic White” touch-up paint – 12ml.

7TUP.04 “Champagne” touch-up paint – 12ml.

7TUP.08 “Black” Titan range touch-up paint – 12ml.

7TUP.14 “Forge Grey” Layout range touch-up paint – 12ml.

Localised damage to powder coated finishes can generally be successfully repaired. The exact techniques depend on the nature and extent of the damage. Powder-coat is a “dry” baked on finish, not a “wet” applied paint, therefore, our “wet” touch-up paints do not exactly match the original colour.

Note: Aura collection is available in 3 colourways for Frame and Textilene® sling:

.01.500 Graphite + Charcoal

.02.505 Arctic White + Pearl

.04.502 Champagne + Titanium

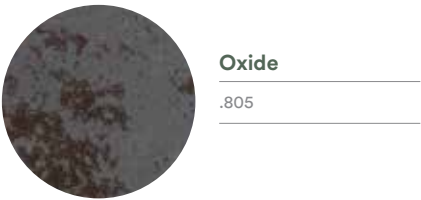
The Equinox dining side chair and armchair plus the Mercury armchair are available in 2 colourways: .01 Graphite and .02 Arctic White powder coated frame, with bespoke matching fabric slings. The Titan products (right) are part of our Rustic Teak range of furniture. The serving table features an insulated ice box for drinks, drawers, bottle racks and a removable table extension leaf. The collection includes an extremely comfortable stacking armchair with shaped rustic teak back and seat on a black powder coated aluminium frame available in .08 Black. Touch-up paints for our furniture collections are available, to repair any damage that might occur during its lifetime of domestic use.



Equinox Armchairs and Equinox Pedestal Table 70 in Arctic White

Layout Bench 130 in Forge Grey

Ceramic Tabletops



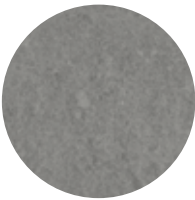
Oxide

.805



Frost

.806



Dusk

.808

We offer our ceramic tabletops in ‘high-fired’ ceramic that are ideal for outdoor use; scratch-proof, weather-resistant and attractive. All ceramics have a wipe clean surface with good colour stability

Monterey ceramic tabletops are available in Oxide and Frost and the Equinox ceramic tabletops, including our extending tables, use Frost and Dusk. Please note that we supply the Mercury serving table (2MES) with a standard ceramic top in Nero Black but we have a selection of optional ceramic tops (2MEST) as follows: .805 Oxide; .806 Frost and .808 Dusk.

Ceramic features:

- Ideal for outdoor use; scratch-proof, weather-resistant and long-lasting beauty
- Wipe clean surface and good colour stability
- A ‘high-fired’ Italian ceramic that is very functional

How do I care for ceramic surfaces?

Ceramic resists scratching and is not harmed by organic and inorganic solvents, disinfectants, and detergents. It can be easily cleaned without affecting its surface characteristics. We recommend using no more than soapy water and a sponge to maintain the aesthetic and practical qualities of this exceptional material.

The aesthetic properties

The ceramic sheets we use are very large, which makes them ideal for a one-piece table top. In addition to being functional this ‘high-fired’ Italian ceramic has a lot of design detail.

What are the features of Laminam ceramic?

Manufactured using advanced techniques, the sheets combine reduced thickness and large size with very high resistance to mechanical stresses, chemicals, wear, scratches, deep abrasion and bending, are easy to sanitise, resistant to frost, fire, mould and UV rays. All the features and chromatic properties of the sheets are unalterable, and remain unchanged over time and in the presence of all kinds of weather conditions. A revolutionary material respectful of the environment: natural raw materials, sustainable technology, products entirely recyclable are the basis of Laminam’s green policy. Reaction to fire means “degree of participation of a material in the development and propagation of fire to which it is subjected”; as regards this feature, materials like Laminam is assigned to European classes according to their increased degree of participation in combustion, in accordance with standard EN 13501. The reaction to fire therefore assesses the higher or lower propensity a

material has to participate in a fire. While the fire resistance, which is a property related to a system or a structure and not to a single material, is different. Laminam does not contain organic material therefore it is resistant to fire and high temperatures. In the event of fire it does not release smoke or toxic substances.

Innovation

Ceramics have thicker, single layer sheets with a fibreglass mesh backing designed to ensure surface evenness. Often referred to as ‘high-fired’ due to the fact it is baked/fired in an electric kiln at exceptionally high temperatures (around 1220°C / over 2000°F) to produce a porcelain product that has high surface strength. The scientific term is sintering, the process of compacting and forming a solid mass of material by heat. These fine sheets are then cut, profiled, and polished by hand to give a smooth soft edge. This Italian made ceramic makes our tabletops exceptionally resistant to breakage. This product has many exceptional features, including;

- Non-porous, meaning it is naturally anti-bacterial and hygienic
- Does not require annual sealing unlike natural marble and granite
- Frost proof; winter snows will not harm it.
- Scratch-, stain- and UV-resistant properties



Monterey 100 Dining Table with Frost Ceramic top



Monterey 100 Dining Table with Oxide Ceramic and Monterey Dining Armchairs in full teak

Furniture Covers and Storage Bags

Our furniture covers are made using Weather MAX-LT®, a modified highly UV-resistant polyester fabric offering superior strength and durability with long-term colour retention.

This fabric is the industry’s most balanced and cost-effective fabric available for outdoor applications requiring high water repellency and excellent breathability; the perfect choice for outdoor furniture covers where lightness and ease of storage offer an advantage.

These lightweight, one-way breathable covers allow trapped moisture to disperse, but prevent rain and dust from penetrating. A unique fastening ensures a secure fit. The life and good looks of the cover depend a great deal on the way it is used and how it is cared for. The covers are easy to put on and remove, and can be stored in their own pouch when not required.

Helpful hints

If the furniture has any sharp corners or edges, place foam rubber on the sharp edge to reduce risk of puncture or abrasion of the covers. For table and chair combinations, placing an object, such as a beach ball, under the centre of the cover can help with water drainage.

Note: Covers for standard dining groups are designed to cover the furniture with the chairs not under the table. Please allow 4 to 6 weeks for delivery.

Furniture covers features:

- WeatherMAX-LT®, a modified highly UV-resistant polyester fabric
- Lightweight, one-way breathable covers allow trapped moisture to disperse
- Unique fastening ensures a secure fit

WeatherMax® Covers & Storage Bags

Covers for Apex

400768 Apex Extending Dining Table 390 Rectangular (open) – 2APX39 table fully open with 14 Armchairs

Covers for Aura

400106 Aura Modular Armchair – 1AUDMA

400105 Aura Modular Ottoman – 1AUDMO

400107 Aura Modular 2-Seater Settee – 1AUDM2

400108 Aura Modular 3-Seater Settee – 1AUDM3

400902 Aura Armchair 2 stacked – 1AUA

400901 Aura Armchair 4 stacked – 1AUA

400915 Aura Adjustable Height Table 140 Rectangular – 2AULA14

400916 Aura Counter Height Dining Table 140 Rectangular – 2AUM14

400917 Aura HD Table 140 Rectangular – 2AUH14, 2AUATH14

400909 Aura HD Table 140 Rectangular and 4 Chairs – 2AUH14 + 1AUHC (x4)

400910 Aura Counter Height Dining Table 140 and 4 Chairs – 2AUM14 + 1AUHC (x4)

400918 Aura Counter Height Dining Table 200 Rectangular –2AUM20

400919 Aura HD Table 200 Rectangular – 2AUH20, 2AUATH20

400920 Aura Narrow Dining Table 140 Rectangular – 2AUN14, 2AUATN14

Covers for Chesapeake

400921 Chesapeake Ottoman – 1CPDO

400923 Chesapeake 3-Seater Settee – 1CPD3

400922 Chesapeake Armchair – 1CPDA

Covers for Equinox

400905 Equinox Armchair 4 stacked – 1EQA, 1EQPA

400906 Equinox Armchair 2 stacked – 1EQA, 1EQPA

400907 Equinox Side Chair 4 stacked – 1EQ, 1EQP

400908 Equinox Side Chair 2 stacked – 1EQ, 1EQP

400775 Equinox Extending Dining Table 360 (open) – 2EQX36 table fully open without chairs

400777 Equinox Extending Dining Table 360 (closed) – 2EQX36 table closed without chairs

Covers for Horizon

400912 Horizon Armchair 2 stacked – 1HOAS

400914 Horizon Armchair 4 stacked – 1HOAS

Covers for Layout

400120 Layout 80cm Low Table

400121 Layout 160cm Low Table

400122 Layout 160cm Narrow Table

400123 Layout Single Seat

400124 Layout Double Seat

400125 Layout Double Bench

400126 Layout Single Ottoman

400127 Layout Single Lounger

400128 Layout Lounger W/arms

400129 Layout Double Lounger

400131 Layout D/lounger W/arms

Covers for Linear

410901 Linear Armchair – 1LIDA

410902 Linear 2-Seater Settee – 1LID2

410903 Linear 3-Seater Settee – 1LID3

410904 Linear Low Table 76 Square – 2LIL07

410905 Linear Side Table 76 Square – 2LIS07

410906 Linear Low Table 120 Rectangular – 2LIL12

410907 Linear Low Table 150 Rectangular – 2LIL15

410908 Linear Ottoman – 1LIDO

Covers for Mercury

400903 Mercury Armchair 4 stacked – 1MEA, 1MEPA

400904 Mercury Armchair 2 stacked – 1MEA, 1MEPA

410801 Mercury Armchair – 1MEDAC

410802 Mercury 2-Seater Settee – 1MEDL + 1MEDR +

1MEDB2 combination

410803 Mercury 3-Seater Settee – 1MEDL + 1MEDM +

1MEDR combination

410804 Mercury Ottoman – 1MEDO

410805 Mercury Centre Module – 1MEDC

410806 Mercury Low Table Square 76 – 2MEL07

Covers for Monterey

400110 Monterey 3-Seater Settee – 1MTD3

400111 Monterey Armchair – 1MTDA

Covers for Titan

400212 Titan Armchair 2 stacked – 1TIA.08

400213 Titan Armchair 3 stacked – 1TIA.08

400214 Titan Armchair 4 stacked – 1TIA.08

400769 Titan Dining Table 240 Rectangular – 2TI24 table only with no chairs

Covers for Other furniture

400721 Highback Armchair – 1ADA, 1HADA, 1MIA, 603351

400722 Highback 2-Seater Settee – 603352

400723 Highback 3-Seater Settee – 603353

400741 Standard Height Armchair – 1EQDA only

400742 Standard Height 2-Seater Settee – 1EQD2, 1HADML+ 1HADMR

400743 Standard Height 3-Seater Settee – 1EQD3, 1HADML + 1HADMM + 1HADMR

400731 Sun Lounger – Large – 1MOL, 603470, 1AUL (up to 3), 1EQPL (up to 2) & 1QUL (up to 4)

400733 Sun Lounger – Standard – 1AUL, 1CAB, 1CAS, 1CAU, 1CYL, 1EQPL (up to 2), 1HOL, 1QUL (up to 2)

400750 Pedestal Table 70 Square – 2EQ07, 2EQP07

400751 90cm to 120cm Dining Table and 4 Chairs – 2AR09, 2AU09 2BA13, 2CPC12, 2EQ09, 2EQ10, 2EQC10, 2MEC12, 2QU10, 603522

400752 100cm Circular HD Table and 4 Chairs – 2BECH09, 2EQCH10

400753 150cm Circular Dining Table and 6 Chairs – 2EQC15,2EQC15S, 2EQC15, 2HOC15, 2WIC15, 603524, 606524, 606534

400810 Cushion Storage Bag fits 2 standard/ultra lounge cushions

400824 Cushion Storage Bag fits 4 armchair/cushions

400828 Cushion Storage Bag fits 8 armchair/cushions

Warranty Periods (years)

Product	Teak	Steel	Aluminium	Woven	Sling	Other
Teak	10					
Rustic Teak	5					
Teak & Sling	10				3	
Teak & Cord	10					3
Eucalyptus	10					3
Stainless Steel & Teak	10	10				
Stainless Steel & Sling		10				
Aluminium & Teak	10		10			
Aluminium & Sling			10		3	
Woven				5		
Ceramic Surfaces						10
Glass & HPL Surfaces						2
Parasols & Bases						2
Cushions						2
Product Covers						2

Product warranties do not apply to the following:

1. Use in a contract or non-residential situation.
2. Damage or chipping to glass, ceramic or HPL due to misuse or impact.
3. Damage due to use of a pressure washer.
4. Deterioration due to the application of teak oil or other wood treatments.
5. Damage that is wear and tear from reasonable private residential use, which includes dents, paint scratches, stains, tears to fabric, etc.
6. Normal deterioration and weathering from exposure to an outdoor environment, which includes small cracks (checking) in wood, colour change, surface blemishes on stainless steel, etc.

All furniture requires some maintenance and we recommend that you clean it regularly using our care products to keep it looking its best.

If you have a problem and the warranty period has expired then you may contact us as we will always do what we can to help you.

A warranty claim must be supported by a photograph.

Materialien & Zubehör

Cushion colours

Our cushions are manufactured using Sunbrella®, a colour-fast fabric that is made from a durable, all-weather, 100% solution-dyed, Teflon®-coated acrylic fibre. This fabric repels water, but cushions should not be left out in heavy rain for prolonged periods.

Rain® fabric has an additional barrier that makes the fabric waterproof and the surface of the cushion quick drying. Although the fabric is waterproof, zips and venting will allow ambient moisture from the atmosphere to enter the cushion. All cushions should be allowed to fully dry before being stored. There is an additional charge for cushions in Sunbrella® Rain® fabric.

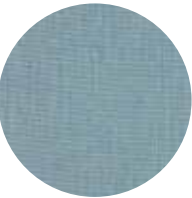
Polsterfarben

Unsere Polster bestehen aus Sunbrella®, einem farbbeständigen Stoff aus strapazierfähiger, wetterbeständiger, 100% durchgefärbter, Teflon®-beschichteter Acrylfaser. Das Gewebe ist wasserabweisend, die Polster sollten jedoch nicht längere Zeit starkem Regen ausgesetzt werden.

Der Stoff Rain® verfügt über eine zusätzliche Schutzschicht, die den Stoff wasserdicht macht und die Oberfläche des Kissens schnell trocknen lässt. Obwohl der Stoff wasserdicht ist, kann Feuchtigkeit aus der Umgebung durch Reissverschlüsse und Luftschlitze in das Kissen eindringen. Alle Kissen sollten vollkommen trocken sein bevor sie gelagert werden. Für Kissen mit dem Stoff Sunbrella® Rain® fallen zusätzliche Kosten an.

Whilst great care has been taken to reproduce fabric and material colours as accurately as possible, it should be noted that due to the limitations of the litho-printing process, we cannot guarantee that the reproduction accurately represents true fabric textures and colours. Please take this into consideration as colours illustrated should only be used as a guide. Some images may contain discontinued fabric colours and furniture ranges.

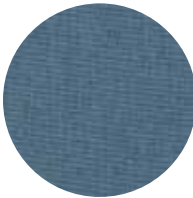
Wenngleich große Sorgfalt darauf verwendet wurde, die Stoff- und Materialfarben möglichst genau zu reproduzieren, kann aufgrund der Einschränkungen des Litho-Druckverfahrens nicht garantiert werden, dass die Abbildungen die tatsächlichen Texturen und Farben hundertprozentig korrekt wiedergeben. Die dargestellten Farben sollten daher nur als Richtschnur verwendet werden. Manche Bilder enthalten möglicherweise Stofffarben und Möbelsortimente, die nicht mehr geführt werden.



Frosty Chine
NAT-10025



Dark Taupe
NAT-10059



Carbon Sky
NAT-10064



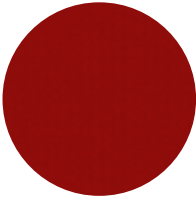
Carbon Beige
NAT-10065



Chalk
NAT-10152



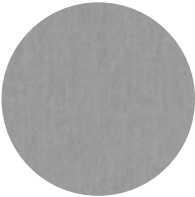
Charcoal
SJA-3705



Paris Red
SJA-3728



Taupe
SJA-3729



Lead Chine
SJA-3756



Quadri Grey
SJA-3778



Adriatic Blue
SJA-3941



Blush
SJA-3965



Marble
SJA-3966



Mint
SJA-3967



Natural
SJA-5404



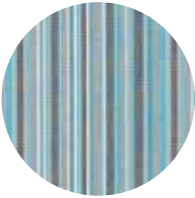
Canvas
SJA-5453



Heather Beige
SJA-5476



Heritage Rust
SJA-18021



Porto Blue Chine
SJA-3776



Natte Ivy
NAT-10232



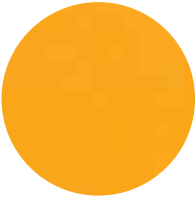
Natte Flamingo
NAT-10234



Stone
SJA-3988



Canvas Almond
SJA-3983



Mimosa
SJA-3938



Indigo
SJA 18017